

LABOUR MARKET SUMMARY

Western Australia

May 2006

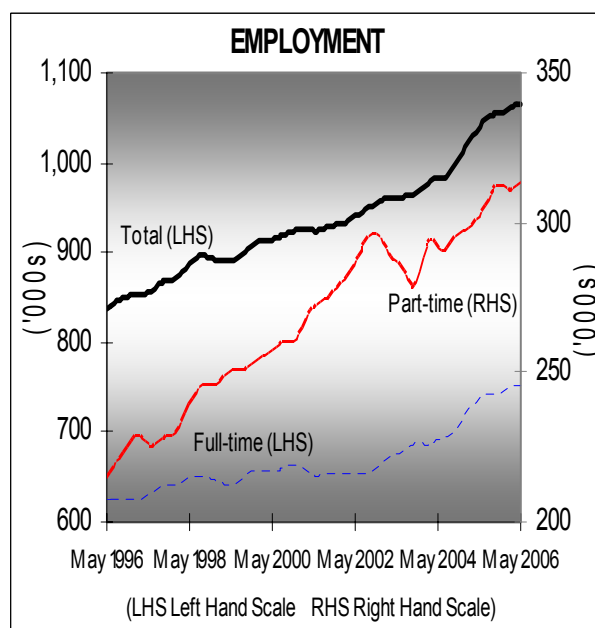
Employment:	<i>the number of persons employed increased by 0.1% to 1,065,700</i>
Unemployment:	<i>the trend unemployment rate decreased by 0.1 percentage points to 3.7% the number of unemployed persons decreased by 3.1% to 41,200</i>
Participation Rate:	<i>decreased by 0.1 percentage points to 67.6%</i>

Employment

Total trend employment increased by 0.1% or 1,100 over the month, and by 2.5% or 25,600 since May 2005 to 1,065,700. Over the month, full-time employment remained stable at 752,800, while part-time employment grew by 0.4% to 312,900. Part-time employment comprises 29.4% of total employment in WA.

Over the month, total employment of males increased by 2.9% to 599,300, while full-time employment increased by 0.1% to 515,100. Total female employment increased by 1.9% to 466,400 over the month, while full-time employment of females decreased by 0.4% to 237,700.

Total trend employment for Australia increased by 0.2% over the month to 10,114,100, with both full-time and part-time employment increasing by 0.1% to 7,221,200 and 2,892,900 respectively.

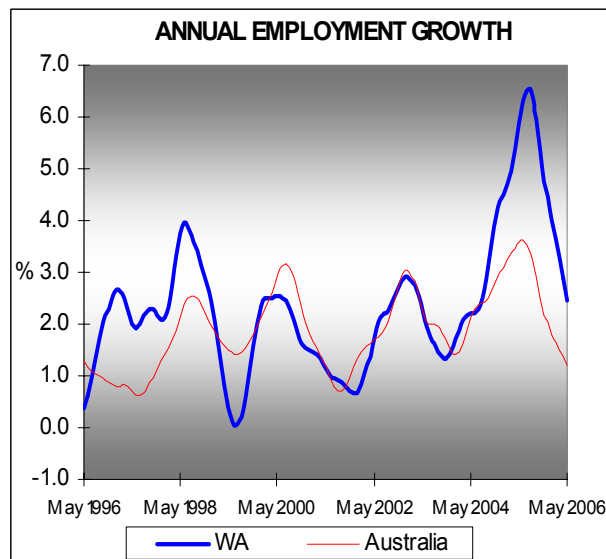


Employment Growth

The annual rate of employment growth in WA in May 2006 was 2.5%, down 0.4 percentage points from last month.

The level of full-time employment has increased by 1.9% over the year while annual part-time employment has increased by 3.7%. The employment growth comprised an annual increase in male employment of 2.9% and 1.9% for female employment.

Nationally, the annual rate of employment growth in May 2006 was 1.2%, a decrease of 0.2 percentage points on last month. Annual employment growth was comprised of a 1.1% increase for full-time employment and a 1.6% for part-time employment.



Note: This report uses Australian Bureau of Statistics (ABS) trend data which are revised each month.

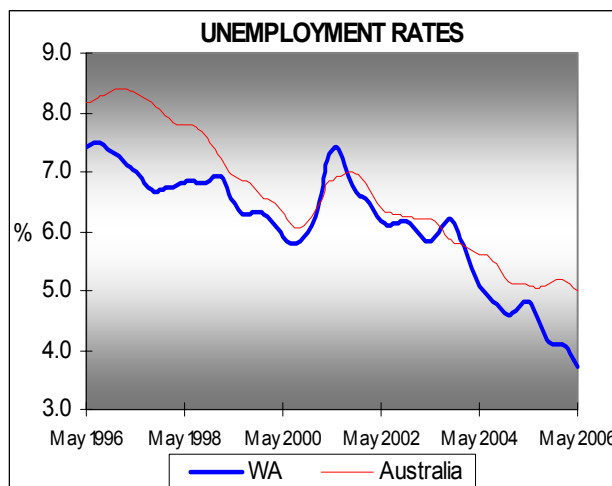
Unemployment - WA and Australia

The trend unemployment rate in WA for May 2006 decreased by 0.1 percentage points to 3.7%. This is 1.1 percentage points lower than the rate in May 2005.

The number of unemployed persons decreased by 3.1% or 1,300 persons in May 2006 to 41,200. This was 21.3% or 11,100 less than the number in May 2005.

Nationally, the trend unemployment rate remained stable at 5.0% in May 2006, however this is 0.1 percentage points lower than in May last year. The national trend unemployment rate for those looking for full-time work in May 2006 was 4.9%.

The seasonally adjusted unemployment rate for WA fell by 0.3 percentage points to 3.5% in May 2006.

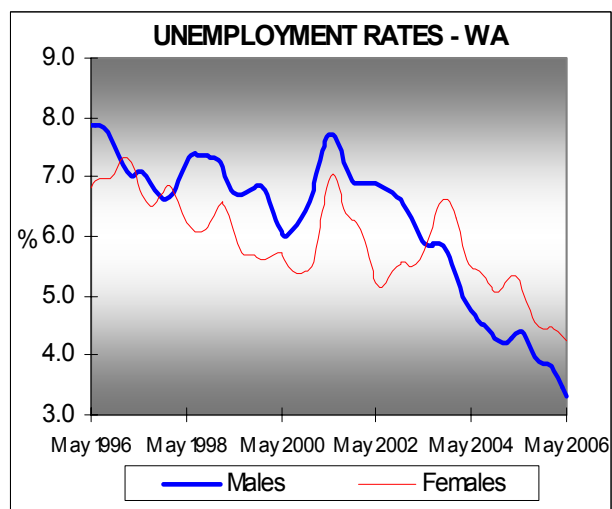


Unemployment WA – Males and Females

The trend unemployment rate for males fell by 0.2 percentage points over May 2006 and by 1.1 percentage points over the year to 3.3%. The unemployment rate for females fell by 0.1 percentage points over the month and by 1.1 percentage points over the year to 4.2%.

The number of unemployed males decreased by 4.2% over the month and by 23.4% over the year to 20,600, while the number of unemployed females decreased by 2.0% over the month and by 19.0% over the year to 20,700.

The average duration of unemployment decreased during April 2006 to 23.9 weeks, with males decreasing to 24.9 weeks and females decreasing to 22.9 weeks. Nationally the average duration of unemployment was 38.0 weeks (average duration of unemployment data is original data and only available for the previous month).



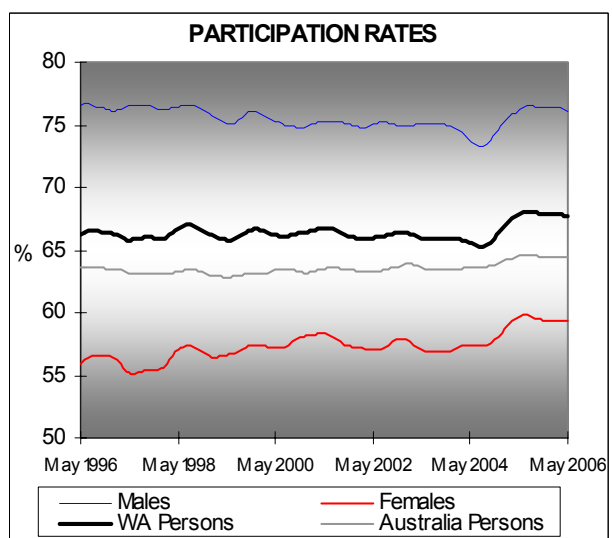
Participation Rates

The trend participation rate for WA decreased by 0.1 percentage points to 67.6% in May 2006. This is 0.3 percentage points lower than the rate a year ago.

Over the month, the male participation rate decreased by 0.1 percentage points to 76.1% while the female participation rate remained stable at 59.3%. Since May last year, the male participation rate has decreased by 0.1 percentage points, while the female participation rate has decreased by 0.4 percentage points.

WA's trend participation rate remains at least 1.4 percentage points higher than any of the other States.

Nationally, the trend participation rate increased by 0.1 percentage points over May 2006 to 64.5%, however, this is a decrease of 0.1 percentage points over the year.



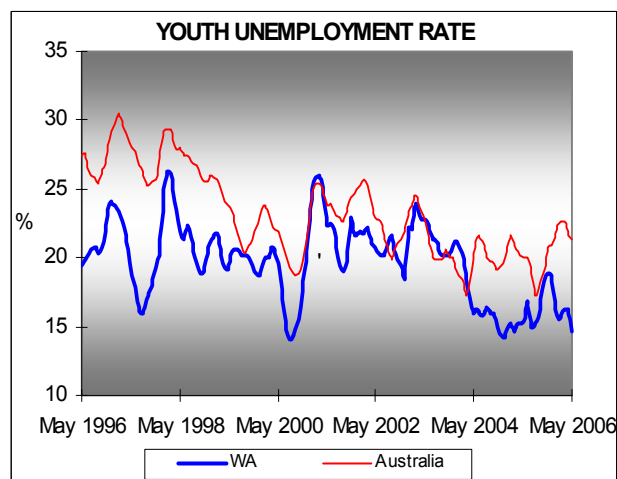
Youth Unemployment

The full-time unemployment rate for youth (ie 15-19 year olds) in WA was 14.7%, a decrease of 1.6 percentage points from the previous month and of 0.7 percentage points over the year.

The national youth full-time unemployment rate was 21.4%, a decrease of 0.3 percentage points over the month, but an increase of 1.4 percentage points since May 2005.

(Data are original and estimated by a quarterly moving average.)

The ABS trend unemployment rate for 15-19 year olds in Australia looking for full-time work in May 2006 was 21.0%, an increase of 0.1 percentage points on last month and of 1.2 percentage points over the year.



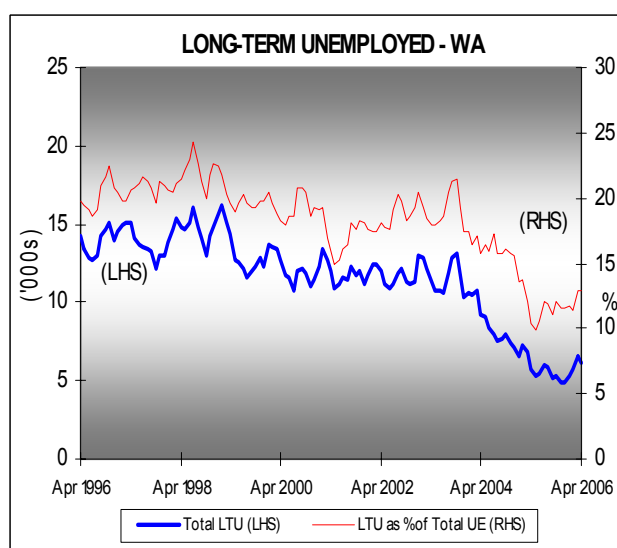
Long-term Unemployment

In April 2006, there were 6,200 persons who had been unemployed for 12 months or more in WA, a decrease of 400 or 5.7% on March 2006, but an increase of 400 or 7.3% on April 2005.

The number of long-term unemployed persons represented 12.9% of the total unemployed in WA in April 2006, with the average duration of long-term unemployment decreasing to 120.4 weeks.

Nationally, the number of LTU persons decreased by 2,700 or 2.6% to 101,900 in April 2006. LTU persons comprised 17.6% of the total number of unemployed, with the average duration of long-term unemployment increasing to 158.3 weeks.

(Data are original, estimated by a quarterly moving average and only available for the previous month.)



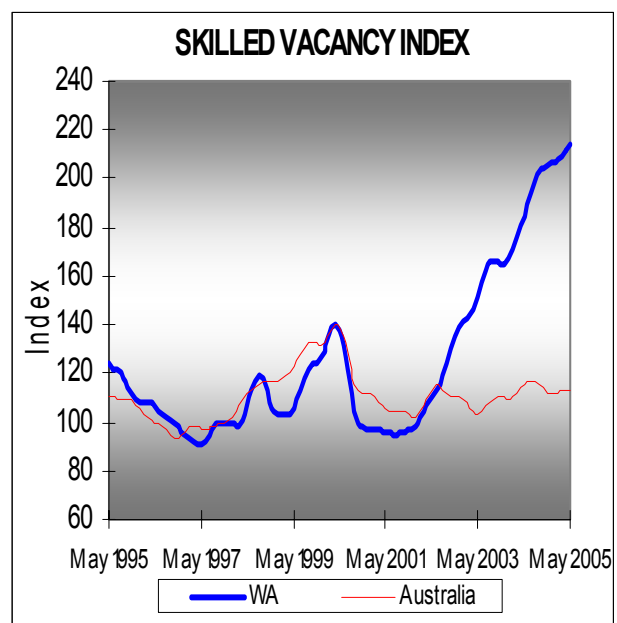
Skilled Vacancies

DEWR's Skilled Vacancy Index (SVI) for WA increased by 3.8% in May 2006 compared with the previous month, and by 9.6% since May 2005 (note the strength of the series in WA compared with the national index).

Nationally, the SVI increased by 1.8% in May 2006, but fell by 1.9% over the year. Over the month, the national SVI increased by 0.1% for Professionals, by 3.5% for Associate Professionals and by 2.9% for Trades.

The number of vacancies on Australian JobSearch, DEWR's online employment site, was just over 6,000 in WA and around 64,000 nationally in mid May 2006.

The ANZ Job Advertisement Series shows that the trend level of newspaper vacancies advertised in WA increased by 2.2% over the month of May 2006 and by 12.2% over the year; while for Australia it remained stable over the month and grew by 5.2% over the year. The trend number of Internet vacancies for Australia increased by 0.8 % over the month and by 26.2% over the year.



SUMMARY TABLE					
Period	May 2006	Apr 2006	Monthly Change	May 2005	Annual Change
Total Employed ('000s)	1,065.7	1,064.7	0.1%	1,040.2	2.5%
- Full-time ('000s)	752.8	753.1	0.0%	738.4	1.9%
- Part-time ('000s)	312.9	311.6	0.4%	301.7	3.7%
Unemployed ('000s)	41.2	42.6	-3.1%	52.4	-21.3%
Labour Force ('000s)	1,107.0	1,107.2	0.0%	1,092.6	1.3%
Unemployment Rate (%)	3.7	3.8	-0.1 percentage points	4.8	-1.1 percentage points
Participation Rate (%)	67.6	67.7	-0.1 percentage points	67.9	-0.3 percentage points

Regional Labour Market Data

Regional data are available from the Australian Bureau of Statistics after the preliminary labour force release. Therefore, the previous month's data are used.

The data in the following table refer to the employed persons' place of residence rather than their place of employment.

The Central Metropolitan Region includes the following Local Government Areas (LGAs): the Towns of Cambridge, Claremont, Cottesloe, Mosman Park and Vincent, the Shire of Peppermint Grove, and the Cities of Nedlands, Perth and Subiaco.

The East Metropolitan Region includes the following LGAs: the Town of Bassendean, the Cities of Bayswater and Swan, and the Shires of Kalamunda and Mundaring.

The North Metropolitan Region includes the following LGAs: the Cities of Joondalup, Stirling and Wanneroo.

The South East Metropolitan Region includes the following LGAs: the Shire of Serpentine-Jarrahdale, the Cities of Armadale, Belmont, Canning, Gosnells and South Perth and the Town of Victoria Park.

The South West Metropolitan Region includes the following LGAs: the Towns of East Fremantle and Kwinana, and the Cities of Cockburn, Fremantle, Melville and Rockingham.

The Southern WA Region includes the Statistical Divisions of South West, Upper Great Southern and Lower Great Southern.

The Rest of WA Region includes the Statistical Divisions of Midlands, South East (Goldfields-Esperance), Central (Mid West-Gascoyne), Pilbara and Kimberley.

REGION	EMPLOYMENT ('000s)			UNEMPLOYMENT ('000s)			UNEMPLOYMENT RATE (%)			PARTICIPATION RATE (%)		
	Quarterly average to Apr 2006	Quarterly average to Jan 2006	Quarterly average to Apr 2005	Quarterly average to Apr 2006	Quarterly average to Jan 2006	Quarterly average to Apr 2005	Quarterly average to Apr 2006	Quarterly average to Jan 2006	Quarterly average to Apr 2005	Quarterly average to Apr 2006	Quarterly average to Jan 2006	Quarterly average to Apr 2005
Perth Total	778.3	778.1	765.3	35.9	34.6	40.8	4.4	4.3	5.1	67.3	67.5	67.8
Central Metropolitan	71.1	74.1	70.8	2.6	1.7	2.4	3.6	2.2	3.3	66.8	68.9	67.7
East Metropolitan	131.4	132.5	129.7	7.3	6.3	5.9	5.3	4.6	4.4	67.5	67.9	67.2
North Metropolitan	240.8	234.9	234.9	12.2	11.0	12.1	4.8	4.5	4.9	70.0	68.3	69.5
South West Metropolitan	161.5	156.5	155.9	6.1	6.8	9.8	3.6	4.2	5.9	66.2	64.8	66.7
South East Metropolitan	173.4	180.2	174.0	7.6	8.7	10.5	4.2	4.6	5.7	64.9	68.0	67.2
Southern WA	147.4	145.3	136.5	6.8	6.9	8.3	4.4	4.5	5.7	67.7	67.2	64.7
Rest of WA	140.1	135.7	130.5	5.1	4.3	6.0	3.5	3.0	4.4	74.2	71.8	71.0

DEWR Leading Indicator of Employment

The Leading Indicator was developed to give advance warning of turning points in cyclical employment. It is a composite indicator combining the cyclical elements of six component series: New Motor Vehicle Sales, Dwelling Approvals, ANZ Newspaper Job Advertisements, ABS Job Vacancies, DEWR Skilled Vacancies Index and Real GDP. These series have been shown to lead employment consistently over the past two decades and are available at <http://www.workplace.gov.au/leadindicator>

The March Quarter 2006 edition of *Small Area Labour Markets* was recently released and is accessible at: <http://www.workplace.gov.au/SALM>

The DEWR WA Labour Economics Office maintains a page on the Workplace Internet site, which contains links to local research publications, including this report. The site is accessible at www.workplace.gov.au/statswa

Disclaimer: This report May contain material of a speculative nature and therefore should be used with some caution. The Commonwealth, its officers or agents disclaim any responsibility for any loss howsoever caused whether due to negligence or otherwise arising from the use of this report.